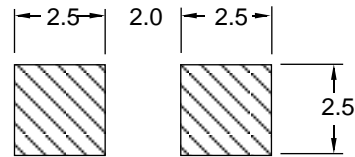
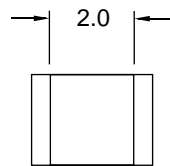
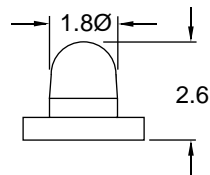
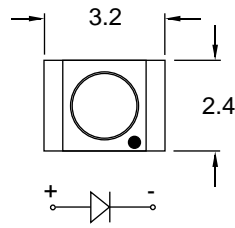


Surface Mount LED, 0428 Series 1.8 mm Round



The 0420 series lamps are miniature lens type designed for surface mounting. The high intensity is achieved by molding a focusing lens onto the substrate. These lamps measure approximately 2.4 x 3.2 mm. These lamps are available in EIA481 tape and reel packaging by specifying the series number is 0428.



Suggested pad dimensions
for reflow soldering



RoHS Compliant
Aug 2004

GENERAL INFORMATION

Operating Temperature Range	-40 °C to +85 °C
Storage Temperature Range	-40 °C to +90 °C
Reflow Soldering Temperature	260 °C for 5 sec max

APPLICATION INFORMATION (ALL RATINGS AT 25 °C AMBIENT)

Part No.	Emitted Color	Peak	$\Delta\lambda$	Absolute Maximum Ratings					E/O Characteristics					
		λ		Pd	If (mA)		Ir	Vr	Vf (V) @ If=20mA			Iv (mcd) @ If=20mA		$2\theta_{1/2}$
		(nm)			(mW)	dc			1/10 duty @ 1 kHz	@ Vr=5V (μ A)	(V)	Min	Typ	
ISRC0428	Red	660	20	100	30	200	100	5	-	1.7	2.4	114	190	30
IVRC0428	Red	640	45	70	25	90	100	5	-	2.0	2.8	23	39	30
IVYC0428	Yellow	585	35	70	20	90	100	5	-	2.0	2.8	35	58	30
IVGC0428	Green	570	30	70	25	90	100	5	-	2.1	2.8	73	122	30
IURC0428*	Red	660	20	100	30	200	100	5	-	1.7	2.4	290	484	30
IUGC0428	Green	570	30	70	30	160	100	5	-	2.1	2.8	75	125	30
IUYC0428	Yellow	590	15	70	30	160	100	5	-	2.1	2.8	346	606	30
IUBC0428	Blue	428	65	140	30	70	50	5	-	3.8	4.5	89	112	30
IUBC0428-7	Blue	468	26	140	30	70	50	5	-	3.5	4.0	118	150	30

Specifications subject to change without notice. Dimensions are in mm \pm 0.3 unless stated otherwise. *reversed polarity

IDEA, Inc., 1351 Titan Way, Brea, CA 92821 Ph:714-525-3302, 800-LED-IDEA; Fax: 714-525-3304 0508

013S-0428