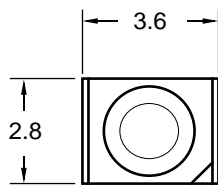


Surface Mount LED, 0678 Series Top LED



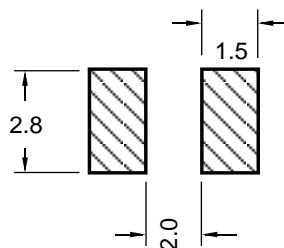
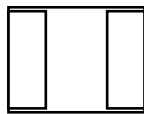
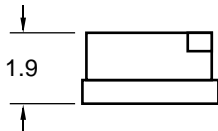
The 0678 series lamps are miniature chip type designed for surface mounting. These lamps are the so-called "Top LED" type, measuring approximately 2.8 x 3.6 mm. These lamps are available in EIA481 tape and reel packaging with approximately 2000 pcs per reel.



Cathode (except for ISRC0678 & IURC0678 where polarity is reversed)



RoHS Compliant
Aug 2004



Recommended
reflow
solder pattern

GENERAL INFORMATION

Operating Temperature Range	-40 °C to +85 °C
Storage Temperature Range	-40 °C to +90 °C
Reflow Soldering Temperature	260 °C for 5 sec max

APPLICATION INFORMATION (ALL RATINGS AT 25 °C AMBIENT)

Part No.	Emitted Color	Peak	$\Delta\lambda$	Absolute Maximum Ratings					E/O Characteristics					
		λ		Pd	If (mA)		Ir	Vr	Vf (V) @ If=20mA			Iv (mcd) @ If=20mA		$2\Theta_{1/2}$
		(nm)	(nm)		(mW)	dc			1/10 duty @ 1 kHz	@ Vr=5V (μ A)	(V)	Min	Typ	
ISRC0678	Red	660	20	100	30	200	100	5	-	1.7	2.4	25	40	120
IVRC0678	Red	640	45	70	25	90	100	5	-	2.0	2.8	6	10	120
IVYC0678	Yellow	585	35	70	20	90	100	5	-	2.0	2.8	6	10	120
IVGC0678	Green	570	30	70	25	90	100	5	-	2.1	2.8	15	25	120
IUBC0678	Blue	428	65	140	30	70	50	5	-	3.8	4.5	22	27	120
IUBC0678-7	Blue	468	26	140	30	70	50	5	-	3.5	4.0	29	37	120
IUWC0678B	BluWht	-	-	120	30	100	100	5	-	3.6	4.0	67	110	120
IUWC0678-7	White	-	-	140	30	70	50	5	-	3.5	4.0	20	33	120

Specifications subject to change without notice. Dimensions are in mm \pm 0.3 unless stated otherwise. *reversed polarity

IDEA, Inc., 1351 Titan Way, Brea, CA 92821 Ph:714-525-3302, 800-LED-IDEA; Fax: 714-525-3304 0508

013S-0678